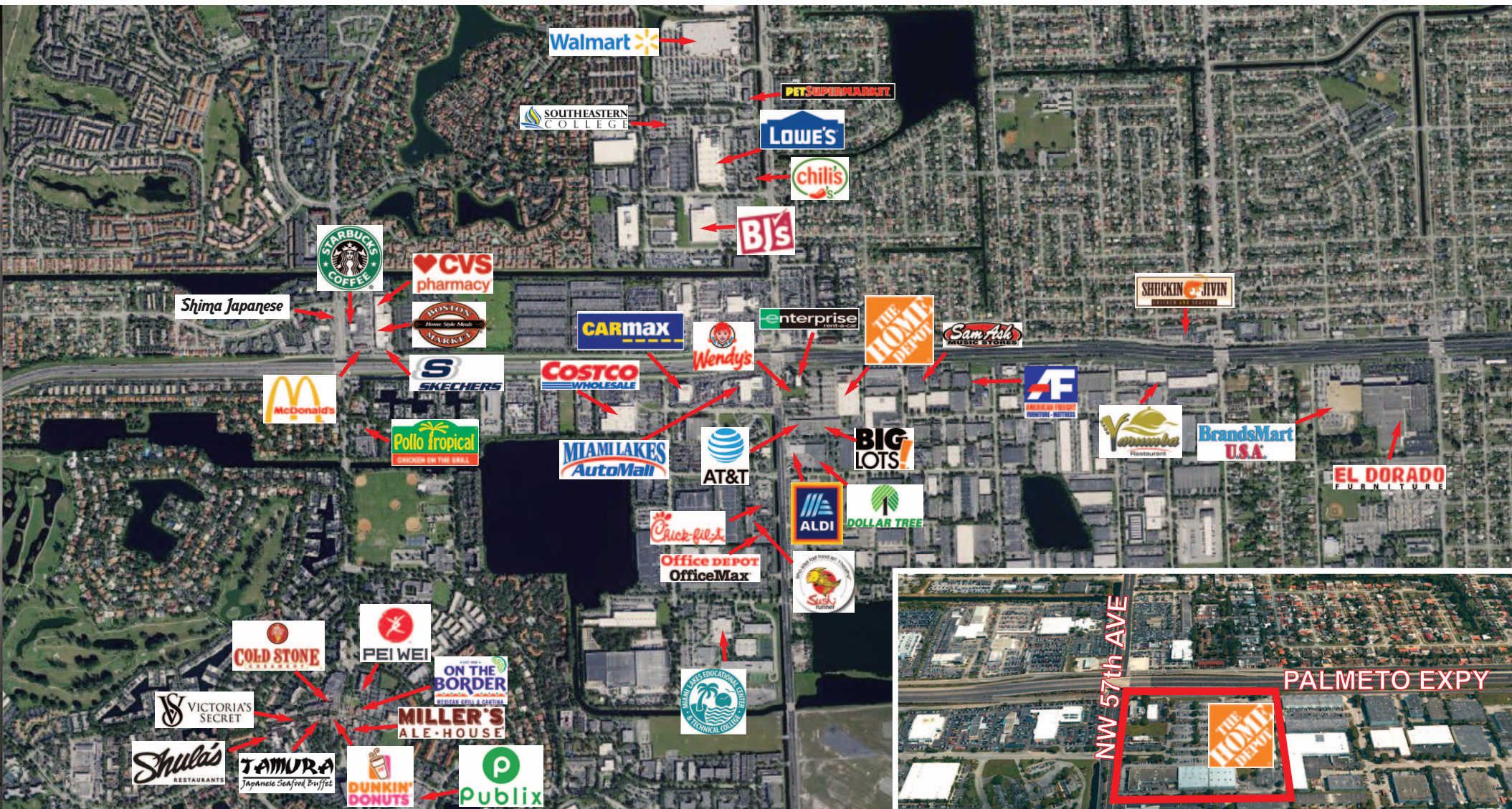


SPACE AVAILABLE - HOME DEPOT CENTER NEAR THE MIAMI LAKES AREA



FEATURES AND HIGHLIGHTS

- Located at the SE intersection of Red Road and the Palmetto (826)
- Visible from Red Road and the Palmetto
- Dedicated Turn Lane, Pylon Sign, Signalized Intersection
- Anchored by HOME DEPOT and BIG LOTS
- Other National Tenants are ATT; BB & T Bank; Wendy's; Enterprise
- VACANT 23,500 SF Anchor space next to Big Lots and Home Depot
- Generous TI allowances being offered for Credit Tenants
- Substantial Capital Improvements Scheduled for 2019
- Over 50,000 people within a 5 mile radius with Median Household Income approx. \$58,000

For Leasing Contact: Josh Levy, COO • M: (561) 558-6291 • josh@levyrai.com

WWW.LEVYREALTYADVISORS.COM

COMMERCIAL | INDUSTRIAL | INVESTMENTS | PROPERTY MANAGEMENT

tel: (954) 491-5505 • fax: (954) 491-5404 • 4901 NW 17th Way, Suite 103 • Ft. Lauderdale, FL 33309



Information deemed reliable but not guaranteed, and subject to change without notice



For Leasing Contact: Josh Levy, COO • M: (561) 558-6291 • josh@levyrai.com

WWW.LEVYREALTYADVISORS.COM

COMMERCIAL | INDUSTRIAL | INVESTMENTS | PROPERTY MANAGEMENT

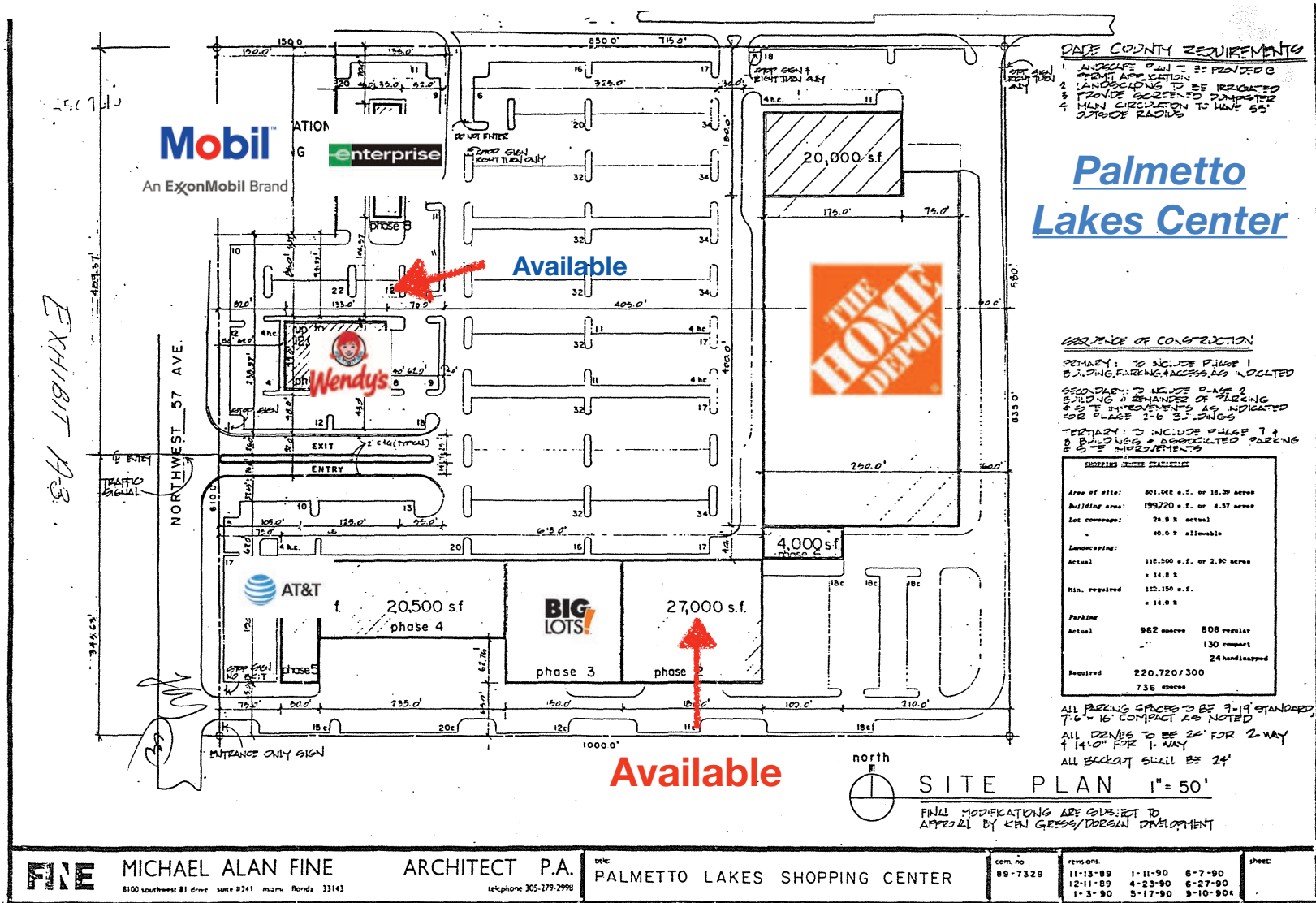
tel: (954) 491-5505 • fax: (954) 491-5404 • 4901 NW 17th Way, Suite 103 • Ft. Lauderdale, FL 33309



Information deemed reliable but not guaranteed, and subject to change without notice

826 Palmetto Expressway

NW 167th Street



For Leasing Contact: Josh Levy, COO • M: (561) 558-6291 • josh@levyrai.com

WWW.LEVYREALTYADVISORS.COM

COMMERCIAL | INDUSTRIAL | INVESTMENTS | PROPERTY MANAGEMENT

tel: (954) 491-5505 • fax: (954) 491-5404 • 4901 NW 17th Way, Suite 103 • Ft. Lauderdale, FL 33309

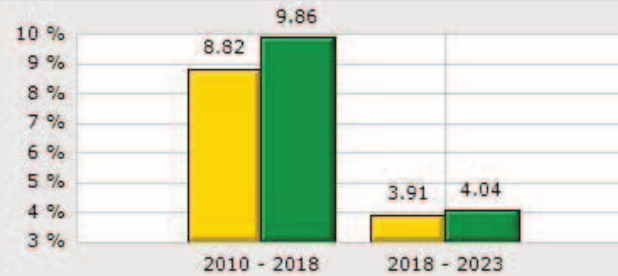


5550-5644 NW 167th St, Hialeah, FL 33014

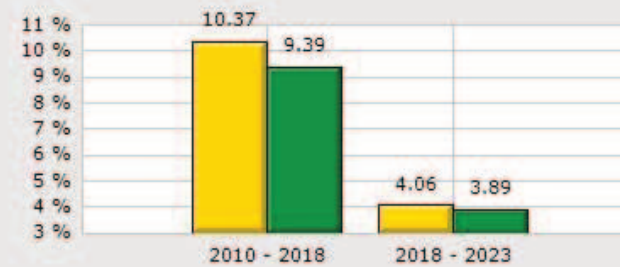
Type: Retail
County: Miami/Dade

1 Mile
County

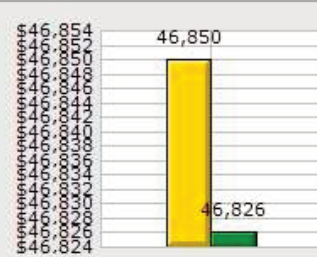
Population Growth



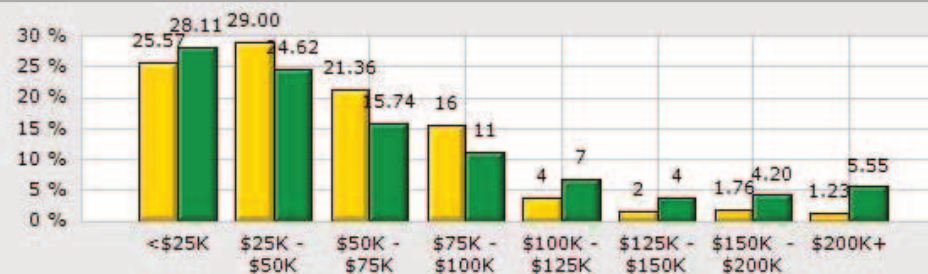
Household Growth



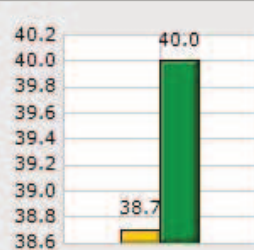
2018 Med Household Inc



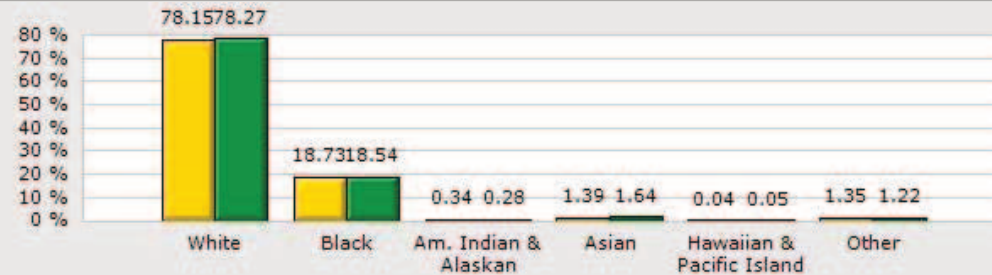
2018 Households by Household Income



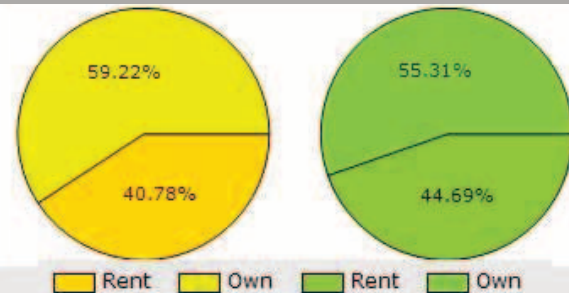
2018 Median Age



2018 Population by Race



2018 Renter vs. Owner



2018 Employed vs. Unemployed

