

FOR LEASE

LAUDERHILL COMMERCE PARK

WAREHOUSE BAYS FOR LEASE

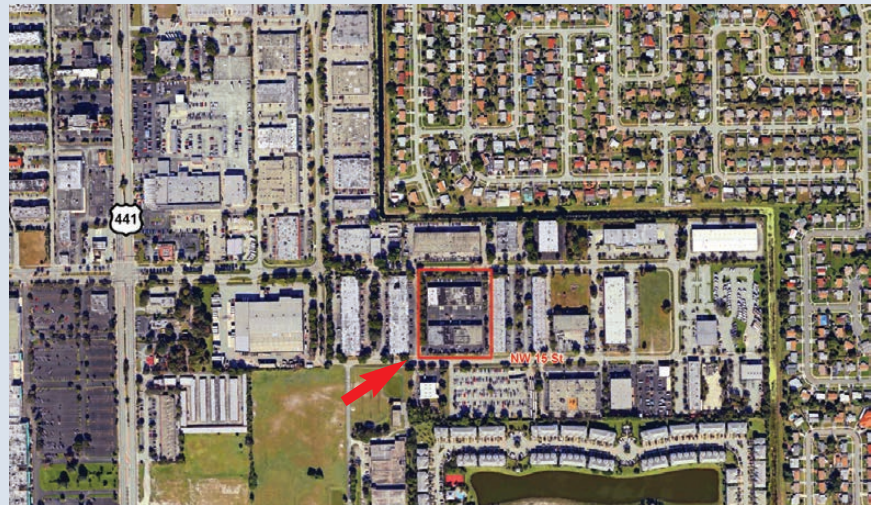
1.5 MILES TO TURNPIKE ENTRANCE/EXIT

3698-3699 NW 15TH ST, LAUDERHILL, FL 33311



PROPERTY FEATURES:

- Bay Sizes 3,200-6,000 Sq. Ft.
- Zoned I-1 (Light/Medium Industrial)
- 12' Wide x 14' High Overhead Doors
- 20' Ft. Ceiling Height
- Excellent Parking & Truck Access
- Great For Manufacturing/Distribution
- High Power 3 Phase Electric
- Dock Height & Street Level Loading
- Starting At \$9.50 PSF (Industrial Gross)
- 1/2 Mile North Of Sunrise Blvd. Just East of 441 (S.R. 7)



LEASING INFO:

Alan Levy President/Broker

off: (954) 491-5505

cell: (954) 658-4477

email: alevy@levyrai.com

Jan Stolow Broker Assoc.

off: (954) 485-9200

cell: (954) 658-4479

email: jstolow@levyrai.com

www.industrialparklaudhill.com

COMMERCIAL | INDUSTRIAL | INVESTMENTS | PROPERTY MANAGEMENT

Information deemed reliable but not guaranteed, and subject to change without notice



tel: (954) 491-5505 • fax: (954) 491-5404 • 4901 NW 17th Way, Suite 103 • Ft. Lauderdale, FL 33309

WWW.LEVYREALTYADVISORS.COM